



**BEFORE THE GOVERNING BOARD OF THE
WEST HILLS COMMUNITY COLLEGE DISTRICT**

**Resolution in the Matter of
Adopting a Plan for Adjustment of Trustee Areas**

WHEREAS, the West Hills Community College District ("District") currently elects each member of its governing board using "by-trustee area" elections, *i.e.*, elections in which "one member of the governing board shall be elected from each trustee area[,]" and in which "[a] candidate for election as a member of the governing board shall reside in, and be registered to vote in, the trustee area he or she seeks to represent[,]" Cal. Educ. Code § 72036(a); *see also* Educ. Code § 5030(b); and

WHEREAS, the California Education Code requires that in the year following the Census (years ending in "1") a community college district that conducts its elections by-trustee area must adjust the boundaries of those areas to equalize their population in light of the new Census data; and

WHEREAS, at a public meeting on September 28, 2021, the Board of Trustees received a presentation from the District's retained special voting rights counsel and retained demographer regarding the legal and policy criteria governing redistricting; and

WHEREAS, on August 12, 2021, the Census Bureau released the decennial redistricting data, after a four-and-a-half month delay caused by the COVID pandemic; and

WHEREAS, on September 20, 2021, the California Statewide Database released a prisoner-adjusted version of the Census Bureau's data, as required by state law, which have been designated by the Department of Finance as the "validated" data for purposes of community college district redistricting under the Education Code; and

WHEREAS, at a public meeting of the Board of Trustees on October 26, 2021, the District's retained demographer provided the Board and the public with certain demographic information regarding the current trustee areas, based on the adjusted, "validated" 2020 Census data; and

WHEREAS, the Census data indicate that the current trustee areas have a "total deviation" as defined under federal law of 17.2%; and

WHEREAS, a map with a total deviation exceeding 10% is presumptively in excess of the range permitted by the equal protection clause, meaning that the District must adjust the trustee area boundaries to bring them back into substantial equality of population; and

WHEREAS, at the Board's public meeting on October 26, 2021, the Board therefore reviewed and adopted criteria to guide the adjustment of the District's trustee area boundaries based on the 2020 Census data; and

WHEREAS, the District's retained demographer thereafter formulated possible alternative redistricting scenarios for review by the public at a public hearing and for consideration by the Board of Trustees, based on the criteria adopted by the Board at its October 26, 2021 meeting; and

WHEREAS, at a public meeting of the Board of Trustees on November 16, 2021, the District's retained demographer presented a draft map which was developed according to the criteria set forth above, for the consideration of the Board and the public, and was posted to the District's website for public viewing; and

WHEREAS, at a public meeting of the Board on December 14, 2021, the Board invited further testimony from the public regarding mapping and any other information the public wished to be considered regarding the redistricting process; and

WHEREAS, at the public meeting of the Board on January 18, 2022, the District's retained demographer presented the draft map, which has been publicly posted on the District's redistricting website since November 9, 2021, for the consideration of the Board and the public; and

WHEREAS, following the presentation of the District's retained demographer on January 18, the Board solicited any final public testimony regarding the draft plan before the Board voted to adopt a final plan; and

WHEREAS, the Board of Trustees has considered all public comment on this matter; and

WHEREAS, the population in the proposed trustee areas of the draft trustee area plan is substantially equal, as defined by law; and

WHEREAS, the draft trustee area plan complies with the federal Voting Rights Act, and with all applicable laws and regulations set forth in the California Education Code and the California Elections Code; and

WHEREAS, the Board of Trustees chooses the trustee area boundaries in proposed Plan 1 because the Board believes that Plan 1 adheres to the redistricting criteria adopted by the Board of Trustees; and

WHEREAS, California Education Code sections 5019(c) and 5019(d) requires the Fresno County Committee on School District Organization ("County Committee") to review a plan to rearrange the boundaries of trustee areas pursuant to a resolution adopted by the governing board of the district; and

NOW, THEREFORE, the District hereby finds, determines, declares, and resolves as follows:

Section 1. Determination of Recitals. The above recitals are true and correct.

Section 2. Adoption of Plan for Adjustment of the Trustee Areas. The Board of Trustees does hereby adopt Plan 1, attached hereto as Exhibit "A" and incorporated herein by this reference, as the trustee area plan to be submitted as soon as possible to the Fresno County Committee on School District Organization ("County Committee") for its approval for use in the District's elections on November 8, 2022, and thereafter.

Section 3. Board Direction. The Chancellor and/or her designee shall take all actions necessary to notify the County Committee of the Board's determination forthwith and provide whatever assistance may be required by the County Committee, or by the Elections Departments of Fresno, Kings, Madera, Monterey, and/or San Benito Counties, to complete the process in a timely fashion to permit implementation of these trustee areas in connection with the District election to be held on November 8, 2022. Staff, including the District's retained demographer when working with the Registrar(s) of Voters during plan implementation and adjustment of precinct configurations, are authorized to make required technical amendments to the new redistricting plan that do not substantively affect the populations in the districts, the district boundaries, compliance with the Board's redistricting criteria or the intent of this resolution, and shall advise the Board of any such amendments that are found to be required in plan implementation.

Section 4. Delegation of Authority. The Chancellor and/or her designee shall take all actions necessary to provide whatever assistance may be required by County Committee and/or the Elections Departments of Fresno, Kings, Madera, Monterey, and San Benito Counties, and to complete the process in a timely fashion to permit implementation of these trustee areas in connection with the District elections to be held on November 8, 2022.

Section 5. Effective Date. This Resolution shall be effective as of the earliest day possible under the law until otherwise rescinded by the Board.

The foregoing resolution was adopted this 18th day of January, 2022 at a regular meeting of the governing board hereof by the following vote, to-wit:

Board Member Cantu:	<u>X</u>	Yes	___	No	___	Abstain	___	Absent
Board Member Jackson:	<u>X</u>	Yes	___	No	___	Abstain	___	Absent
Board Member Levinson:	<u>X</u>	Yes	___	No	___	Abstain	___	Absent
Board Member Maldonado:	<u>X</u>	Yes	___	No	___	Abstain	___	Absent
Board Member McKean:	<u>X</u>	Yes	___	No	___	Abstain	___	Absent
Board Member Oxborrow:	<u>X</u>	Yes	___	No	___	Abstain	___	Absent
Board Member Raygoza:	<u>X</u>	Yes	___	No	___	Abstain	___	Absent

Dated: 01/18/2022



Mark McKean
President of the Board of Trustees

CERTIFICATION

STATE OF CALIFORNIA)
COUNTY OF FRESNO)

I, the undersigned, hereby certify that this resolution is a true and correct copy of a resolution adopted on the 18th day of January, 2022, at a regular meeting of the Board of Trustees of the West Hills Community College District, and that such resolution appears in the official minutes of the governing board under that date.

Dated: 01/18/2022



Nina Oxborrow
Clerk of the Board of Trustees

**West Hills Community College District
Trustee Area Redistricting 2022**

Exhibit A

Contents:





- Overview map of Plan 1 (adopted 1/18/2022)
- Detail Map of TA 2/TA 6 boundary in Mendota with change from 2011 Trustee Area boundaries (all other Trustee Areas have the same boundaries as in the 2011 Plan)
- Data Table

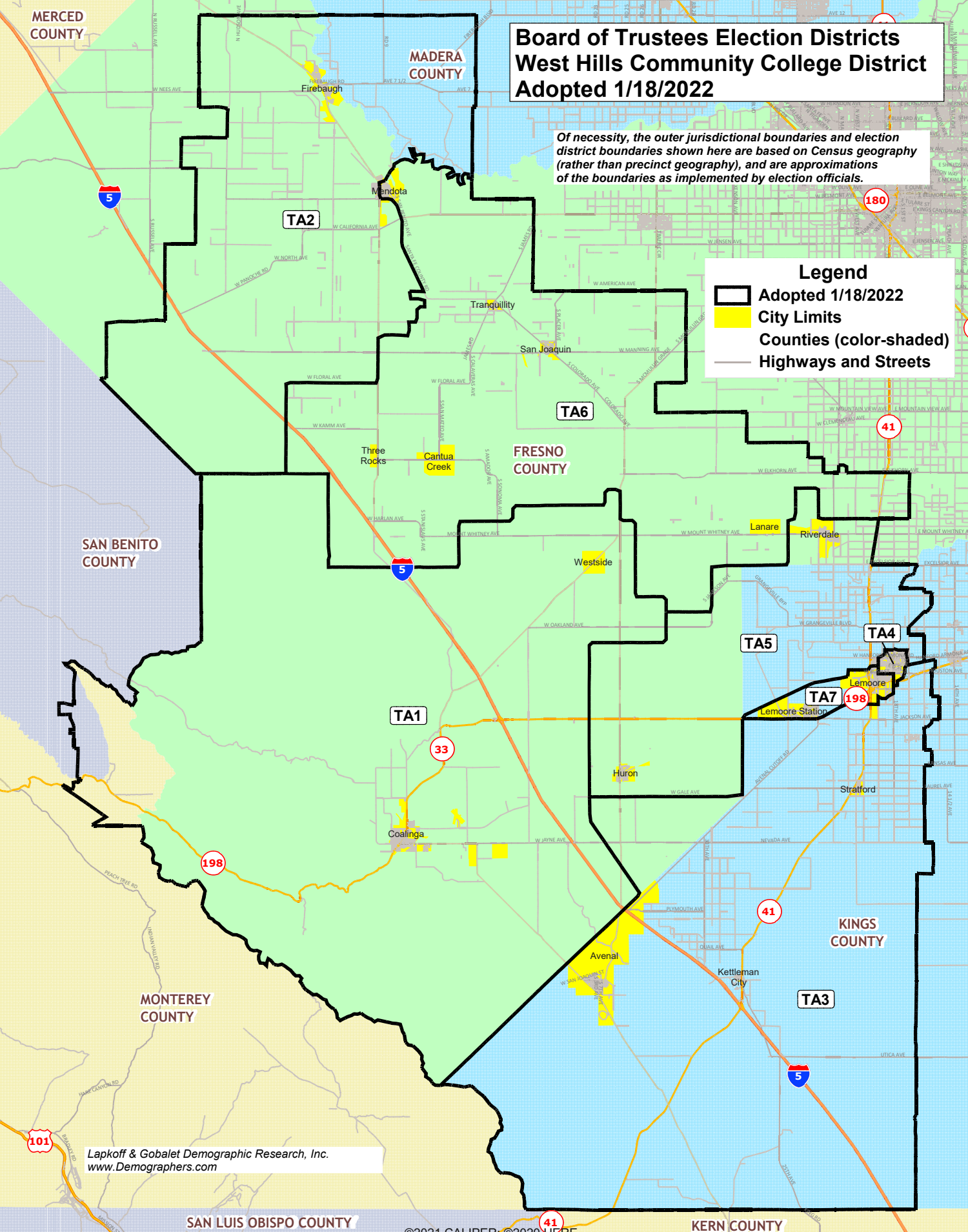
MERCER COUNTY

Board of Trustees Election Districts West Hills Community College District Adopted 1/18/2022

Of necessity, the outer jurisdictional boundaries and election district boundaries shown here are based on Census geography (rather than precinct geography), and are approximations of the boundaries as implemented by election officials.

Legend

-  Adopted 1/18/2022
-  City Limits
-  Counties (color-shaded)
-  Highways and Streets



SAN BENITO COUNTY

FRESNO COUNTY

KINGS COUNTY

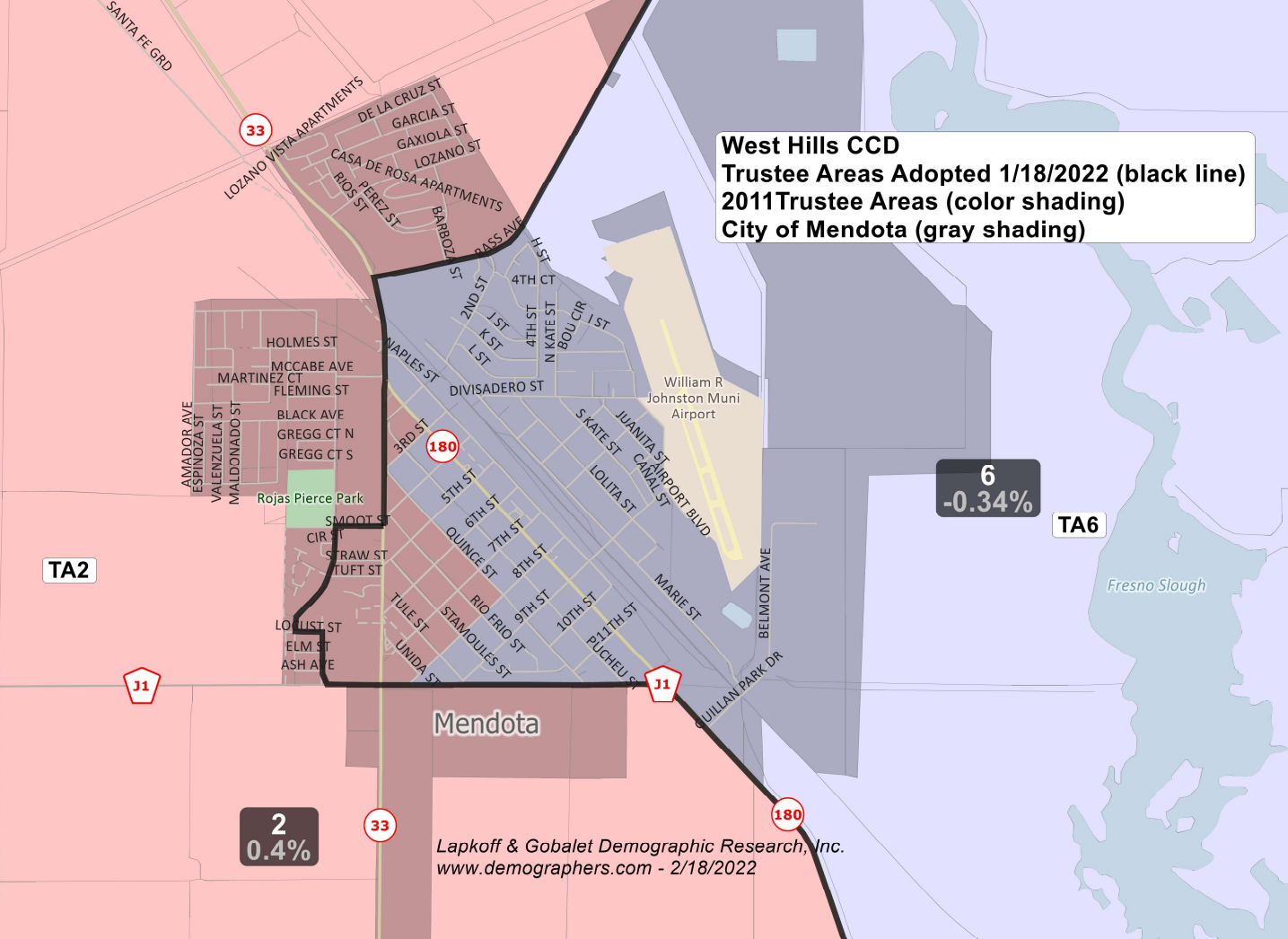
MONTEREY COUNTY

Lapkoff & Gobalet Demographic Research, Inc.
www.Demographers.com

SAN LUIS OBISPO COUNTY

KERN COUNTY

West Hills CCD
Trustee Areas Adopted 1/18/2022 (black line)
2011 Trustee Areas (color shading)
City of Mendota (gray shading)



TA2

6
-0.34%

TA6

Mendota

2
0.4%

Lapkoﬀ & Gobalet Demographic Research, Inc.
www.demographers.com - 2/18/2022

Trustee Area Boundaries Adopted by the WHCCD Board of Trustees 1/18/2022

Non-Hispanic								Non-Hispanic						
Trustee Area	Total Population	Latino/Hispanic	White	Black	Asian	Other	Total	Trustee Area	Total Registered	Latino/Hispanic	White	Black	Asian	Other
Total Population Percentages								Registered Voters						
1	16,157	67%	25%	3%	2%	3%	100%	1	6,382	46%			2%	
2	16,331	93%	5%	0%	0%	1%	100%	2	4,773	80%			2%	
3	15,366	83%	10%	1%	1%	6%	100%	3	4,260	66%			3%	
4	16,501	48%	31%	7%	10%	4%	100%	4	7,458	36%			4%	
5	15,293	75%	19%	2%	2%	2%	100%	5	5,181	51%			4%	
6	15,152	93%	5%	1%	0%	1%	100%	6	4,386	79%			2%	
7	15,725	37%	40%	10%	8%	5%	100%	7	4,901	33%			4%	
Total	110,525	71%	20%	3%	4%	3%	100%	Total	37,341	53%			3%	
Age 18+ (Voting Age) Population Percentages								Actual Voters						
1	11,766	63%	28%	3%	3%	3%	100%	1	4,536	40%			2%	
2	10,698	93%	6%	0%	0%	1%	100%	2	3,001	78%			1%	
3	10,381	80%	12%	1%	1%	6%	100%	3	2,700	61%			3%	
4	12,000	43%	35%	7%	11%	4%	100%	4	5,302	32%			4%	
5	10,459	71%	23%	2%	2%	2%	100%	5	3,685	45%			4%	
6	10,338	92%	6%	0%	1%	1%	100%	6	2,799	77%			2%	
7	10,796	34%	42%	10%	9%	5%	100%	7	3,546	30%			4%	
Total	76,438	67%	22%	3%	4%	3%	100%	Total	25,569	48%			3%	
Citizens of Voting Age (CVAP) Percentages								Trustee				1/7 of Total Pop = 15,789 (Ideal TA Pop)		
Trustee Area	Total							Area	Total Pop	Deviation	% Deviation			
1	10,142	47%	41%	3%	2%	7%	100%	1	16,157	368	2.3%			
2	5,095	81%	13%	0%	0%	6%	100%	2	16,331	542	3.4%			
3	6,404	65%	21%	2%	1%	11%	100%	3	15,366	-423	-2.7%			
4	10,090	33%	45%	6%	10%	5%	100%	4	16,501	712	4.5%			
5	7,736	47%	41%	4%	2%	6%	100%	5	15,293	-496	-3.1%			
6	5,133	81%	13%	1%	0%	5%	100%	6	15,152	-637	-4.0%			
7	11,727	30%	48%	11%	7%	5%	100%	7	15,725	-64	-0.4%			
Total	56,327	49%	36%	5%	4%	6%	100%	Total	110,525	1,349	8.5%			